

Film Treatment:

# Skin.

Written by: Denise Papas Meechan

[denisepapasmeechan.com](http://denisepapasmeechan.com) (917) 612 0087 [todenisepapas@gmail.com](mailto:todenisepapas@gmail.com)

**LOGLINE:** Ten contestants are sequestered on a "Survivor"-type reality show. Soon, one mutates into a monstrous enraged killer!

## SYNOPSIS:

Ten contestants are on a Reality Show called "**ICE!**". "**ICE!**" is "*Survivor*" with a demented twist. The contestants are dropped onto a remote island to survive and perform missions. What they **DON'T KNOW**- the real point of the show is to **SCARE THE HELL OUT OF THEM!**

They are terrified by production crew into believing there is **SOMETHING** on the island **HUNTING THEM TO KILL.**



The psychological drama of the seclusion, infighting, extreme weather, and merciless haunting of the sinister television crew are too much for the contestants to take.

**Then, a Mutation! A contestant transforms into a Skinless Monster on a Slaughtering Spree!**

It's a shock to the producers. However, **RATINGS SOAR!**

The live internet viewers at home think it's a fantastic well-produced fright. Better Ratings with each kill make it difficult for the Producers to reveal the truth.

## THE CONTAMINATION OF EVAN:

Once a **hip, likable Evangelical Snowboarder**, EVAN is **reborn as a Savage Killing Beast!**

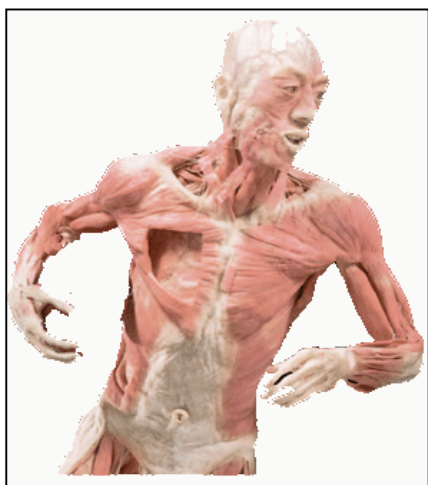
He transforms after eating a deviant fruit recently discovered on the island. It is unknown how the fruit came to be and even if it is fruit at all- or rather, animal.

The forbidden fruit organism fuses with Evan's biological matter. It turns him. **His skin peels away revealing the ugliness that lies within.**



Agonizing pain, itching and rashes illustrate his Evolution.

### EVAN is Reborn as a grotesque, horrifying, killing Creature!



There's NO SKIN to bind his rage! The **intolerance** and **prejudices** implanted by his Church yet muffled by the layers of skin are now set free.

Rid of the chains that bound his true beliefs, EVAN as SKIN has supernatural Speed, Agility, Strength, and Intolerance to heat and cold.

#### THE KILLINGS:

No one is safe! A killing rampage begins. There is NO ESCAPE! Everyone on the island is SLAUGHTERED!

The Twelve Contestants, Two Production crew and the Island Reserve Scientist- ALL DEAD!

Each Murder is a hate-crime, sub-consciously depicting their sins against the Church.

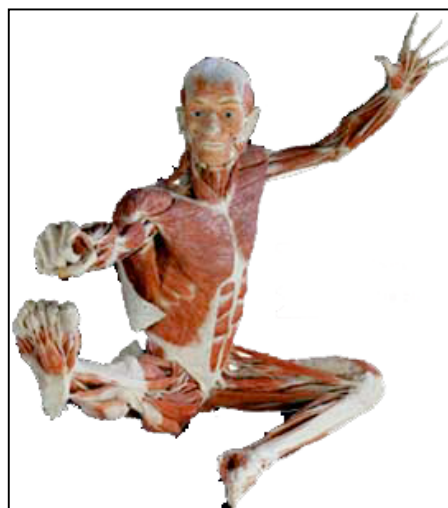
The **OB-Gyn** (Pro-Choice) is ripped open and her uterus torn out. The **Gluttonous Boxer**- engorged by her own hand. The **Gay Hairdresser**- jammed from behind with an icicle. The model's **Pride**- her face- is torn off. The **Atheist**- impaled by a crucifix. The **Drug Addict**- perforated from head to toe. The **Scientist**, a believer of Evolution and an anti-Creationist must be killed, as well as all **Minorities** and those that signify **Greed, Envy, Sloth and Lust**.

SKIN will survive.

#### RESOLUTION:

SKIN is wise in his killing choices. His first victims are the production crew and Scientist, who hold the only communication with the outside world.

One by one, he butchers his 12 teammates. All killings are as gruesome, bloody and horrific as SKIN sees their crimes against God.



The Executive Producer of "ICE!" flies in from L.A. to save the show and her job. Too late! She is greeted by carnage. Her crew, contestants, career- ALL DEAD!

Unable to control the chaos, she turns a blind eye and starts the cover-up of the catastrophe. The Executives save themselves with no regard to the hell they've caused the world, the planet and mankind.



SKIN is left to roam the Island (open for a sequel). The horror has been unleashed- a Monster Creation of Man and Media.

## Skin.

That's reality.

### THEMES:

**SKIN** throws a frightening wrench into the innocuous format of reality television whilst subconsciously questioning extreme religious beliefs and our human impact on the environment. Through character and plot development the film subtly dissects:

1. Intolerance Indoctrinated by Extremist Religions: Extreme Religions preach hatred of Gays, Pro Choice groups, etc, creating hate-filled monsters of their followers.
2. Global Warming: Our idleness allows the dangers to multiply. The weather in Antarctica was once too frigid to allow a fruit like the one Evan eats to grow. Milder temperatures and more precipitation permit unnatural growths and animal endurance in the area.

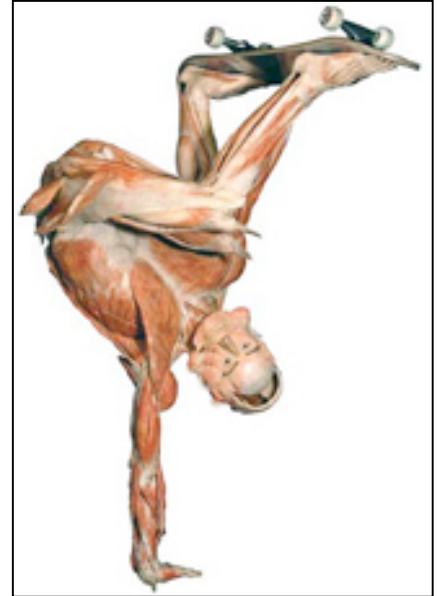


3. Environmental Destruction through Human Ignorance: Neglecting our planet leads to the death as well as the **birth** of organisms unknown. The evolution of possible new species through human carelessness is just as dangerous as extinction.
4. Struggle between Church and State: The Executives of "ICE!" are a metaphor for the state in the ongoing struggle. Their lack of involvement and willingness to cover-up mirrors that of Congress. The Government passes legislation of a religious nature (anti-abortion, Proposition 8) though it is unconstitutional.

## CHARACTERS:

Each contestant is a Metaphor for what an Ultra-Religious Church would perceive as a threat to what is "Righteous":

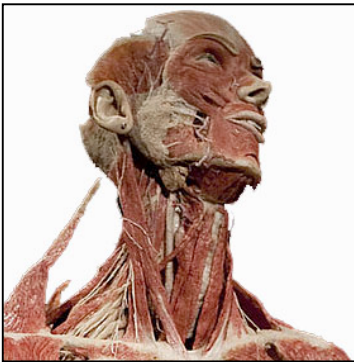
1. **Snowboarder/Extreme Sportsman, (M)(19) EVAN**, friendly, cute **Evangelical Christian**. Evan never left the small town he lives before gaining a spot on the Reality Show "ICE!" He is pleasant and likable, until an Environmental/Biological anomaly reveals the killer inside- exposing his unabated **Wrath** and **bigotry**. Evan is **SKIN!**



### Other ICE! Contestants

2. **Pop Star American Idol Wanna-Be, MEGAN (F)(22)**. Sexy and flirty- she embodies **LUST** in the killer's eyes.
3. A **Homosexual Hairdresser, TEEVO (M)(26)** that lay in Sodom.
4. An **OB-Gyn, ISHA (F)(31)** undermines the Religious Right's pro-life stance with each **abortion** performed.
5. An **Inner City Rapper, CHEE** from the Bronx (M)(19) whose **Addictions** threaten our society.
6. A **Boxer, KERRY (F)(25)** portrays **Gluttony** when she tries to steal food to keep up her Body Mass Index.
7. An **IT/Computer Engineer, TY (F)(27)** At a desk all day, is **Sloth**.
8. An **Over-the-Hill Runway Model, REBECK (F)(32)** ever name-dropping and over-confident, exhibits excessive **Pride**.
9. A **Vegan Chef, CARA (F)(25)** a **Buddhist and Environmentalist**. Her daily meditation is a glaring affirmation of other Religions and our expectations of Tolerance towards them.
10. A **Mortgage Broker, STEVE (M)(33)**. The cause of the Global Economic Crisis is **Greed**.

### Other Characters



1. **Executive Producer of "ICE!" JULES (F)(47)** She witnesses the aftermath of the slaughter but only covers it up.
2. **Field Producer, JAMIE (F)(25) Jewish**. She communicates with the L.A. office from Macca.
3. **Camera Man/TD, MIKE (M) (31), Black**
4. **Macca Island** is itself a character. One of the last ecologically pristine places on Earth- it shouldn't be soiled by Humans, Media or Ignorance. Macca represents **Eden**.